

City of Alexandria - Future Land Use

2017

Map 5-4a

Future Land Use

- | | | | |
|--|------------------------------------|--|--|
| | Mixed Use #1 | | Medical Services |
| | Mixed Use #2 | | Institutional |
| | Low to Medium Density Residential | | Public/Governmental Facilities |
| | Medium to High Density Residential | | Private Outdoor Commercial Recreational |
| | High Density Residential | | Private Parks/Open Space/Natural Amenities |
| | Manufactured Home Park | | Public Open Space/Natural Areas |
| | Seasonal Recreational Commercial | | Public Park |
| | CBD Commercial | | Lakes/Wetlands |
| | Commercial | | Right of Way |
| | Highway Commercial | | Airport/Rail |
| | Industrial | | Urban Reserve |

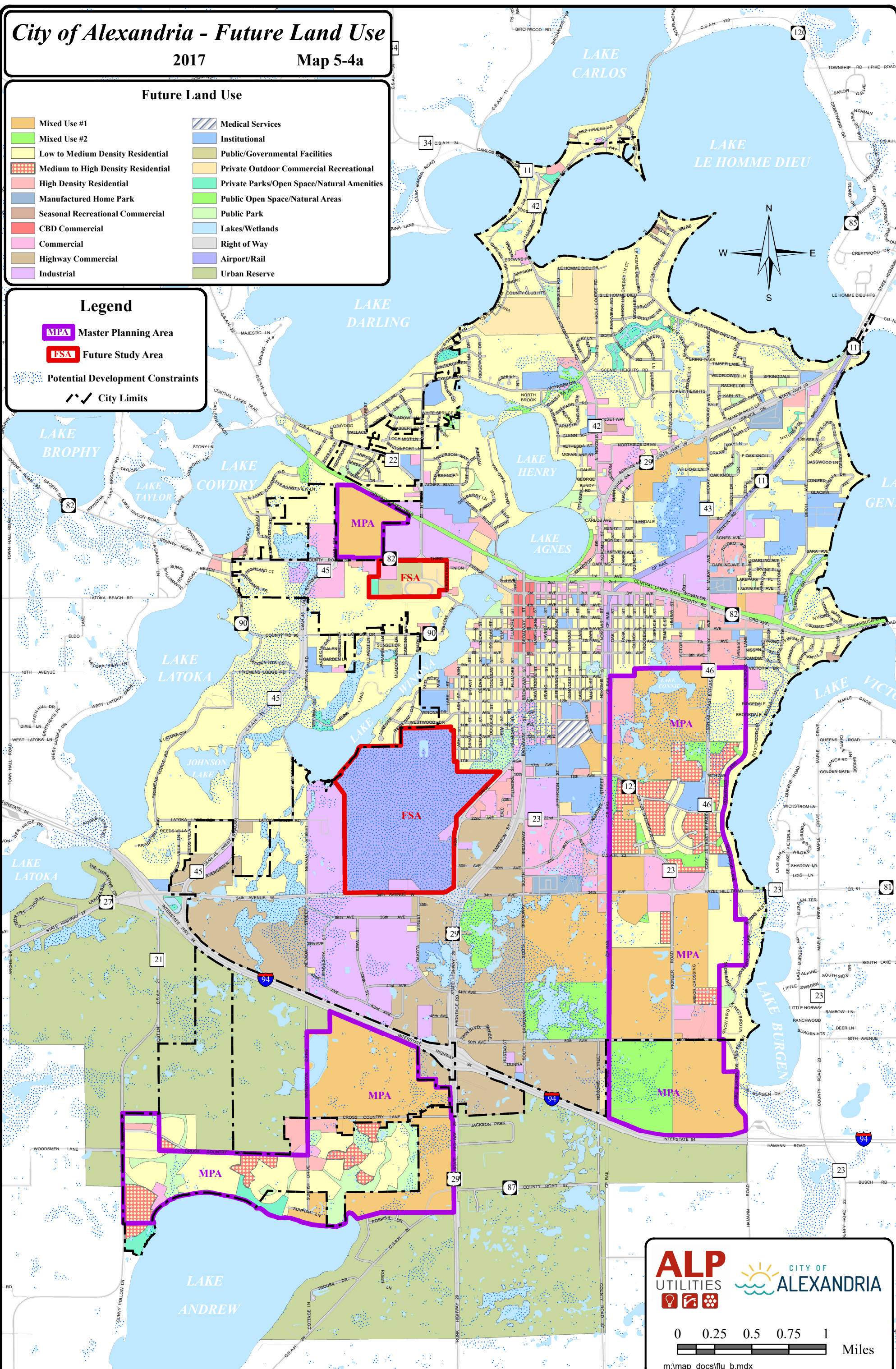
Legend

Master Planning Area

Future Study Area

Potential Development Constraints

City Limits



ALP UTILITIES **CITY OF ALEXANDRIA**

0 0.25 0.5 0.75 1 Miles

m:\map_docs\flu_b.mdx