

# CITY OF ALEXANDRIA SMALL AREA CORRIDOR PLAN

Proposal - January 2018

Mike Weber  
City of Alexandria  
704 Broadway  
Alexandria, MN 56308

**Dear Mr. Weber,**

Community Design Group (CDG) is excited to present this statement of qualifications to lead the development of the Small Area Corridor Plan for the 17th/18th Avenue and TH29/Nokomis Street Corridor. This planning effort is an opportunity for the City of Alexandria to develop an action-oriented, context-sensitive, and collaborative plan for the future of the corridor. Our team of experienced planners, designers, and engagement specialists are well-qualified to meet the needs of this project and bring it to a successful and best-of-class completion.

**Expertise** We offer a proven track record of excellence and innovation in multimodal transportation planning, community planning, and stakeholder engagement with a portfolio that includes corridor studies, small area plans, comprehensive plans, and pedestrian and bicycle facility planning and design. Our practice in multimodal transportation planning is guided by an Active Living/Community Health framework that emphasizes the development of safe, comfortable, connected, and inviting transportation networks to improve conditions for all users and modes. We apply our expertise in planning, engineering, and urban design to develop cost-effective, responsive, and implementable plans and recommendations.

**Collaborative Approach** We recognize the importance of stakeholder engagement and collaboration for the success of the plan and its implementation. We have pioneered innovative approaches to ensure broad and meaningful participation and to build community support and capacity for implementation. We have experience facilitating engagement on complex projects with diverse stakeholders - residents, property owners, agencies, institutions, and businesses - including leading corporate engagement for the development of the 3M Multimodal Transportation Plan.

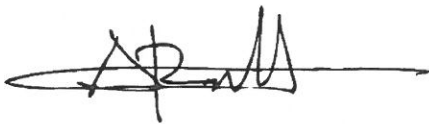
**Focus on Implementation** We know that the purpose of planning is action - and that the true measure of a plan's success will be how easily its recommendations can be implemented. To this end, our goal is to deliver a process that yields usable products, workable solutions, and a framework for implementation that will guide future action, investment, and decision-making. We develop plans and communication materials that are graphically-rich, understandable, and easy-to-use, and employ innovative tools to educate and inform the public, solicit input, and drive plan consensus.

Our team is prepared to facilitate a thorough and efficient planning process for the Small Area Corridor Plan, including rigorous analysis, robust stakeholder engagement, development of appropriate planning and design recommendations, and delivery of a high-quality, usable, and implementation-oriented plan.

The CDG team will be led by Antonio Rosell, founder and Director of CDG and 2015 Minnesota Planner of the Year. Antonio will serve as Principal-In-Charge and will oversee the project and guide our team of planners, designers, and engagement specialists. An Urban Planner and Civil Engineer with twenty four years of experience, Antonio has led numerous planning and community engagement projects, including work in rural communities across Minnesota and the Midwest.

Britt Berner will serve as Project Manager and point of contact throughout all phases of the project. Britt is a talented planner with diverse planning and engagement experience. Britt is leading CDG's work on the US 59 Corridor Study in Worthington, MN. Britt has also led recent planning efforts including development of the St. Joseph Comprehensive Plan and Edina Pedestrian and Bicycle Master Plan. Britt and Antonio will be supported by an in-house team of planners and designers committed to providing thoughtful, innovative, and rigorous planning and engagement.

Thank you for the opportunity to submit this response. Please feel free to contact me if you have any questions or if you would like any additional information for evaluation of our submittal.

A handwritten signature in black ink, appearing to read 'A. Rosell', with a long horizontal line extending to the right.

**Antonio M. Rosell, P.E., AICP**  
Director | Community Design Group  
arosell@c-d-g.org | C: 612.234.7078

# FIRM PROFILE



212 3rd Avenue North, Suite 515  
Minneapolis, MN 55401  
P: 612-352-2901

**CDG: A PUBLIC INTEREST DESIGN CONSULTANCY,  
DELIVERING SUSTAINABLE, PEOPLE-CENTERED SOLUTIONS  
FOR MOBILITY, PLACE, AND COMMUNITY DESIGN.**



**Community Design Group (CDG)** is a Twin Cities planning and design firm specializing in community planning, placemaking, visioning and engagement, sustainable transportation, and parks and recreation planning. Active since 2001, CDG is recognized for its people-centered, asset-based approach that infuses a community health and Active Living perspective through all of its work.

CDG's work responds to a community's unique history, context and circumstances to offer cost-effective, implementable recommendations that respond to community needs and vision and help make cities more healthful, vital and prosperous places. CDG's community-centered approach engages clients, residents and stakeholders in meaningful consultation and develops consensus toward solutions and implementation.

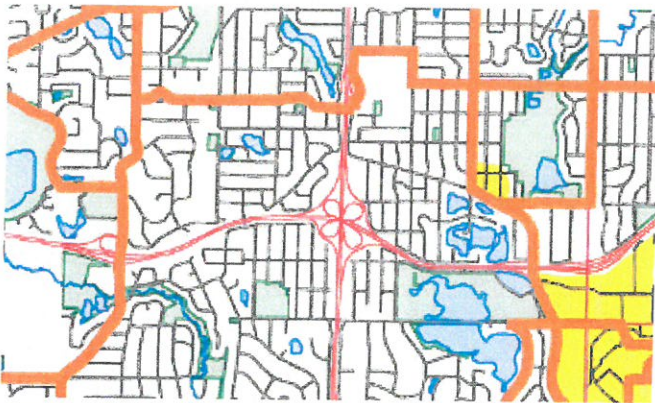
#### **FIRM FACTS:**

Established 2001  
17 Years In Service  
Minneapolis-Based Firm  
Services across the Midwest  
6 Planners  
2 Designers  
1 Civil Engineer  
1 Operations Manager  
1 LEED Accredited Professional

#### **SERVICES:**

Multimodal Transportation Planning  
Community Planning  
Community Engagement  
Landscape Architecture  
Parks Planning and Design

## CDG's Core Services:



### Building Quality of Life Through Placemaking + Community Planning

Our neighborhoods, main streets, parks, and public spaces are core elements that define the quality of life we enjoy in our cities and towns. We work to create human-scaled places where people feel welcome and comfortable; places that are interesting, safe, and vital, and that encourage connection and community. We employ responsive and place-specific approaches to create more vital, sustainable, equitable, and healthy communities.



### Proactive + Effective Community Engagement

We design honest, accessible, and thorough public processes that engage, inspire, educate, and commit diverse stakeholders to work together to achieve a common goal. We design inclusive public participation processes that provide meaningful opportunities for engagement through accessible, user-friendly, and interactive strategies. We build lasting structures for engagement that carry on beyond the life of the project.



### Leadership in Multimodal Transportation Planning

We work to develop safe, comfortable, connected, and inviting transportation networks that address the needs of people of all ages and abilities, and that increase access, safety, and convenience for all modes - including walking and biking. Our work responds to a community's unique context and circumstances and results in cost-effective, implementable recommendations that expand transportation options in our cities and communities.



### Excellence in Parks + Recreation Master Planning + Design

We offer deep experience in all aspects of park and recreation design and planning, from detailed needs analysis to concept and detailed design at all scales, to master planning services. While we pride ourselves on our creative, innovative approaches to our work, our efforts are grounded in technical expertise to ensure cost-effective results that result in efficiencies for long term maintenance and operations practices.

# EXPERIENCE

The CDG team brings to this project diverse experience planning for cities and communities across the State and Midwest, with a portfolio that include small area plans, corridor studies, comprehensive plans, land use plans, multimodal transportation plans, and pedestrian and bicycle facility planning and design. On the following pages, we highlight select planning, design, and stakeholder engagement efforts relevant to the Small Area Corridor Plan.

Select current and previous planning projects include:

## **Small Area Plans + Corridor Studies**

- » US 59 Worthington Corridor Study
- » Edina Grandview District Development Framework
- » Dinkytown District Small Area Plan
- » Nicollet Island-East Bank Neighborhood Small Area Plan
- » Sheridan Neighborhood Plan
- » City of Minneapolis 38th Street and Chicago Avenue Small Area / Corridor Framework Plan

## **Comprehensive + Land Use Plans**

- » City of St. Joseph Comprehensive Plan Update
- » City of Grand Marais Comprehensive Plan Update
- » City of International Falls Comprehensive Plan Update
- » City of Minneapolis 2040 Comprehensive Plan Public Engagement
- » Grand Forks 2045 Land Use Plan Update

## **Multimodal Transportation Plans**

- » 3M Multimodal Transportation Plan
- » CSAH 81 Reconstruction Graphics - Hennepin County, MN
- » TH 252 Conversion Concept Study - Hennepin County, MN
- » Rochester City Loop Transportation Study
- » Bottineau Transit Corridor Infrastructure - Hennepin County, MN
- » MnDOT Statewide Bicycle System Plan
- » Regional Active Transportation Plan for Benton, Sherburne Stearns, and Wright Counties
- » Bismarck-Mandan Long Range Transportation Plan, Bismarck, ND
- » MnDOT Safe Routes to School (SRTS) Planning - Statewide

# Bozeman Design Guidelines

Bozeman, MT



Known as “The Most Livable Place” for its renowned natural beauty, Bozeman is also a regional commercial and tourism center for much of the south central region of Montana.

Community Design Group recently developed the city’s new Urban Design Manual to protect and enhance the city’s urban image and walkability, and increase opportunities for innovative urban design, improved multimodal connectivity, and orderly and sustainable development - all while also responding to the city’s unique physical and natural character.

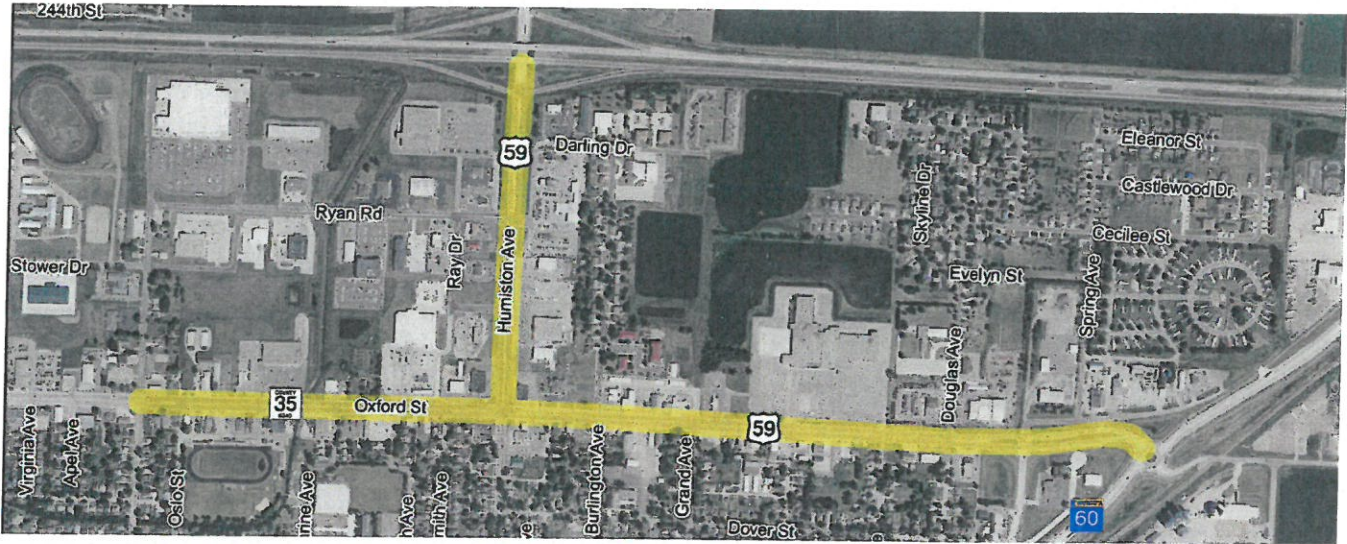
CDG’s recommendations provide guidance for building, site and district design with clarity, user-friendliness, and consistency. The guidelines create a framework for development that is human scaled, that adheres to transit-oriented development principles, and that promotes pedestrian accessibility while also maximizing opportunity for economic activity and placemaking.

**CLIENT:** City of Bozeman  
**YEAR:** Completed March 2017  
**SCOPE:** Urban Design Planning,  
Community Engagement and Visioning

**REFERENCE:** Chris Saunders  
Community Development Manager  
City of Bozeman  
E: [csaunders@bozeman.net](mailto:csaunders@bozeman.net)  
P: 406-582-2260

# US 59 Worthington Corridor Study

Worthington, MN



CDG is working with a consultant team to develop a long-term vision for the reconstruction of the US 59 Corridor in Worthington, MN. US 59 is a primary route through the commercial district of Worthington and is slated for reconstruction. CDG is contributing to the corridor vision and purpose, multimodal corridor considerations, planning and implementing public engagement activities, including written and spoken Spanish translation.

In addition to engagement events, CDG has collaborated with focus groups which include area businesses, pedestrian and bicycle interest groups, and governmental representatives from the City and the County that will provide leadership throughout the process, guidance on local policies and provide local presence to broaden the opportunities for community engagement. CDG is excited to work with the MnDOT, the City of Worthington, and Nobles County as well as with community members to create a set of guidelines that will serve as a blueprint for future development along US 59.

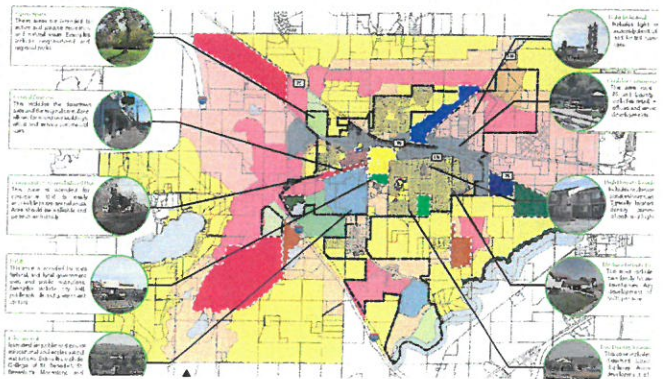
**CLIENT:** Worthington, MN  
**YEAR:** 2016 - Present  
**SCOPE:** Community Engagement and Visioning  
**AWARD:** 2017 Excellence in Community Engagement, MnAPA

**REFERENCE:** Craig Vaughn  
SRF Consulting  
Minneapolis, MN  
E: [cvaughn@srfconsulting.com](mailto:cvaughn@srfconsulting.com)  
P: 763.249.6774



# St. Joseph Comprehensive Plan

St, Joseph, MN



Community Design Group is developing the Comprehensive Plan Update for the City of St. Joseph. CDG is leading the visioning process, community analysis, technical evaluation, zoning code updates, and development recommendations for the City. The Plan is addressing a wide range of topics, including population and employment, economic development, housing, transportation, land use and sustainable development.

St. Joseph is a town of about 6,500 residents located just outside of St. Cloud, and is home to the College of St. Benedict. The comprehensive plan is addressing many important issues including vibrancy and placemaking opportunities in the city's downtown, growth of local businesses and industry, walking and biking connectivity and connection to local and regional assets, and reviewing zoning and land use developments in the township in consideration of future annexation.

**CLIENT:** City of St. Joseph  
**YEAR:** January 2017-present  
**SCOPE:** Comprehensive Planning,  
Community Engagement and Visioning

**REFERENCE:** Therese Haffner  
Community Development Director  
City of St. Joseph  
E: [thaffner@cityofstjoseph.com](mailto:thaffner@cityofstjoseph.com)  
P: 320-363-7201

# Nicollet Island - East Bank Small Area Plan

Minneapolis, MN



The Nicollet Island-East Bank neighborhood is an important development market in the Twin Cities - and is also a vital crossroads linking Downtown Minneapolis, the University of Minnesota, and the Northeast Arts District.

In an effort to proactively guide the neighborhood's growth, the Nicollet Island-East Bank Neighborhood Association and the City of Minneapolis embarked on a Small Area Plan effort. Priorities included attracting high quality development to underutilized areas and increasing comfort for pedestrians.

As part of a team of consultants, CDG led the pedestrian, bicycle and transit planning components for the plan - and led development of the plan's community engagement process.

CDG's recommendations focus on improving walkability as a key to success for the district's current and future businesses, to its continued success as a mixed-use residential market, and as a successful economic development district for the city.

**CLIENT:** Nicollet Island - East Bank Neighborhood Association

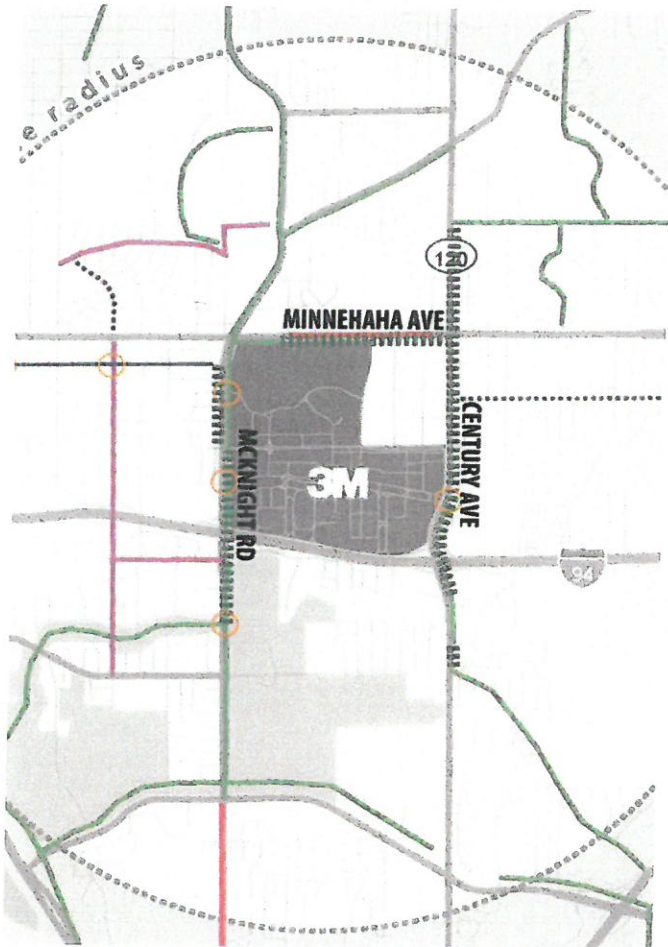
**YEAR:** Completed 2014

**SCOPE:** Comprehensive Planning, Pedestrian and Bicycle Planning, Community Engagement and Visioning

**REFERENCE:** P. Victor Grambsch  
President, Nicollet Island - East Bank Neighborhood Association  
E: [info@niebna.com](mailto:info@niebna.com)

# 3M Multimodal Transportation Plan

Alexandria, MN



The Multimodal Transportation Plan was developed to improve vehicular, pedestrian and bicycle transportation throughout the 3M Center campus in Maplewood, Minnesota. The Plan will guide planning, development and management of existing and future streets, parking lots/ramps, and pedestrian and bicycle facilities within the 3M Center campus as well as connections to adjacent roadways and off-campus pedestrian and bicycle routes.

The plan provides a 10-year blueprint to enhance the sustainability of the campus through a coordinated, multi-modal approach to campus access and mobility. A set of visionary and achievable transportation goals and objectives will guide investment, management, and operation of 3M Center's transportation system over the next ten years. Plan goals included a focus on safety, mobility and access, active and healthy living and sustainability.

As part of a team of consultants, CDG provided planning, design, and corporate engagement for the transportation plan, including recommendations for improving transit connections, as well as bicycle and pedestrian travel.

**CLIENT:** 3M Corporation

**YEAR:** 2015

**SCOPE:** Pedestrian and Bicycle Planning, Corporate Engagement

**REFERENCE:** Mary LenzmeierCarlson

3M Engineering, 3M Center

E: macarlson-lenzmeier@mmm.com

# SCOPE OF SERVICES

The following scope of services builds on the scope of work outlined in the RFP and outlines key tasks and responsibilities associated with this project.

## Task 1: Inventory and Assessment

CDG will develop an inventory and assessment of existing conditions and resources in the corridor and surrounding areas. This will include development of maps, analysis, and other research to inform plan recommendations and stakeholder engagement.

Our analysis will identify key issues and opportunities and address at a minimum:

- » Roadways and Circulation (all modes)
- » Existing and Planned Land Use
- » Development Character
- » Streetscape and Public Realm Inventory
- » Review of existing plans and regulations (comprehensive plan, zoning, subdivision regulations, etc)

The existing conditions inventory and assessment will be summarized as part of the final plan document and underlying maps and datasets will be provided to the Client. CDG will work with the City to collect relevant datasets, GIS/CAD, and background documents.

## Task 2: Stakeholder Engagement

The City of Alexandria Council and staff will serve as the core stakeholder group and will be responsible for provide oversight and input into the planning process. CDG will also engage institutional and business stakeholders such as Douglas County Hospital, 3M, and Alexandria Technical and Community College (ATCC) as well as relevant agencies (e.g. MnDOT, school district), area businesses, residents, and property owners.

CDG will maintain regular communications with the City's designated Project Manager (via email, phone, and in-person communication as needed) to ensure coordination of planning and engagement activities and tracking of current and upcoming tasks and deliverables. CDG will work with the City to schedule meetings, site visits, workshops, and other engagement activities.

Engagement activities will include at a minimum:

- » Planning and facilitation of two (2) meetings to secure input from the Project Partners and Stakeholders.
- » Two (2) field visits to tour the project area. These field visits may involve City staff and other project partners and key stakeholders - and will serve as means to gather information about the project area and identify key issues and opportunities regarding roadway design, streetscape, and development potential.
- » Formal presentation of draft conceptual plan to the Project Partners.
- » Final presentation of conceptual Small Area Corridor Plan to the Project Partners and Stakeholders.
- » Coordination with the MnDOT Intersection Control Evaluation for the 17th and 18th Avenue intersections with TH29/Broadway.

A summary of stakeholder input will be incorporated in the final plan document.



### Task 3: Draft Plan Development

Based on our inventory and assessment, understanding of key issues and opportunities, and input received from the City and other stakeholder groups, we will develop a draft Small Area Corridor Plan.

The draft plan will include at a minimum:

- » **Summary of Existing Conditions**
- » **Summary of Input from Stakeholder Engagement**
- » **Planned Facilities and Uses**
  - Project description
  - Site Plan (including future roadway and circulation, land use and development)
  - Future pedestrian and bicycle network (and connection to existing and planned/proposed facilities)
  - Conceptual roadway design
  - Description of physical improvements
- » **Recommendations and Design Guidelines**
  - Streetscape Design (general appearance, materials, street/lane width, intersection alternatives and features, and handicapped access)
  - Landscaping (recommendations for sustainable green amenities that enhance pedestrian comfort and soften the existing harsh urban environment)
  - Gateways and Transitions (standards that achieve compatibility between areas adjacent to the corridor)
  - Economic Development Connections (mixed-use nodes, housing, commercial and industrial uses)
  - Parking Recommendations (effective shared parking strategies and future parking needs)
- » **Implementation**
  - Capital development phases
  - Operational plan
  - Management strategies
  - Preliminary capital outlay budget
  - Preliminary operations and maintenance budget
  - Regulatory Controls (Zoning, subdivision regulations, design guidelines, and sign regulations)

The draft plan will also address current and long-term issues and interests in the area, including but not limited to:

- » Planned relocation of the ATCC front entrance to the south end of the main building, adjacent to 18th Avenue.
- » Continued buffering of the 3M campus from the public right of way.
- » Realignment of Hawthorne Street farther to the east to provide a direct north/south route to the Hospital's main parking area and entrance.

CDG will provide the draft Small Area Corridor Plan to the City, stakeholders, and interested parties and will facilitate a process for review, feedback, and revision.

### Task 4: Final Plan Submittal

CDG will incorporate final change the plan based on direction from the City and other stakeholder input. The draft and final Small Area Corridor Plan documents will be highly-visual and user-friendly and incorporate a combination of graphics and text to illustrate the plan concepts, recommendations, and guidance.

We will provide the City with drawings in AutoCAD in a .dxf or .dwg file format and text documents in Microsoft Word file format on a disk or other electronic media as determined by the City. We will provide not less than ten (10) printed copies of the Small Area Corridor Plan, along with a CD-ROM (or other electronic media) version.



# FEE STRUCTURE

The following work fee proposal covers all services detailed in our Scope of Services. The Small Area Corridor Plan will provide detailed recommendations for a broad range of growth opportunities for the subject corridor. If selected, we will work with the City to refine a detailed scope that addresses the specific needs of the community.

### Staff/Hourly Rates:

TASK	Rosell	Berner	Cowgill	Moore-Ritchie	Nortrom	Total Hours	Total Labor (\$)
	\$135	\$100	\$100	\$100	\$115		
TASK 1 - Inventory and Assessment	6	6	0	0	3	15	\$1,755
TASK 2 - Stakeholder Engagement	11	14	8	0	0	33	\$3,685
TASK 3 - Draft Plan Development	15	25	8	6	0	54	\$5,925
TASK 4 - Final Plan Submittal	5	20	2	4	0	31	\$3,275
<b>TOTAL hours per staff (all tasks)</b>	<b>37</b>	<b>66</b>	<b>18</b>	<b>10</b>	<b>3</b>	<b>133</b>	<b>\$14,640</b>

<b>TOTAL ALL HOURS:</b>	<b>133</b>
<b>TOTAL ALL LABOR (\$):</b>	<b>\$14,640</b>
<b>TRAVEL:</b>	<b>\$350</b>
<b>TOTAL PROJECT COST:</b>	<b>\$14,990</b>

## RESUMES



### Antonio Rosell, P.E., AICP

Principal-In-Charge

Antonio Rosell is the founder and Director of Community Design Group. An Urban Planner and Civil Engineer with over twenty years of professional experience, he integrates innovation and best-practices in community design, Active Transportation, and citizen participation to facilitate community learning, consensus-building and project implementation.

He has led numerous planning, design and community engagement projects in Minnesota and beyond, and serves as Adjunct Professor in the Urban and Regional Planning Program of the University of Minnesota's Humphrey School. He was recognized as "2015 Planner of the Year" by the Minnesota Chapter of the American Planning Association.

#### Education

Master of Urban and Regional Planning, University of Minnesota Humphrey Institute of Public Affairs

Coursework in Architecture, University of Minnesota

Bachelor of Science, Civil Engineering, Florida International University

#### Registrations

Licensed Professional Engineer (P.E.), Minnesota

Certified Planner, American Institute of Certified Planners (AICP)

#### Memberships

Association of Pedestrian and Bicycle Professionals (APBP)

#### Awards

2015 Minnesota Planner of the Year, Minnesota Chapter of the American Planning Association (APA)

#### Relevant Experience

- » Bozeman Design Guidelines - Bozeman, MN
- » US 59 Worthington Corridor Study - Worthington, MN
- » 3M Multimodal Transportation Plan - Alexandria, MN
- » Nicollet Island-East Bank Neighborhood Small Area Plan - Minneapolis, MN
- » Dinkytown District Small Area Plan - Minneapolis, MN
- » Sheridan Neighborhood Small Area Plan - Minneapolis, MN
- » Edina Grandview District Development Framework - Edina, MN
- » St. Joseph Comprehensive Plan Update - St. Joseph, MN
- » Grand Marais Comprehensive Plan Update - Grand Marais, MN
- » International Falls Comprehensive Plan Update - International Falls, MN
- » Minneapolis 2040 Comprehensive Plan Update Engagement - Minneapolis, MN
- » Grand Forks 2045 Land Use Plan Update - Grand Forks, ND
- » Rochester City Loop Transportation Study - Rochester, MN
- » MnDOT Statewide Bicycle System Plan
- » Regional Active Transportation Plan for Benton, Sherburne Stearns, and Wright Counties
- » Bismarck-Mandan Long Range Transportation Plan, Bismarck, ND
- » MnDOT Safe Routes to School (SRTS) Planning - Statewide
- » Edina Pedestrian and Bicycle Master Plan - Edina, MN
- » Red Wing Tactical Urbanism Pilot Demonstration Project - Red Wing, MN



## Britt Berner, MURP

Project Manager / Lead Planner

Britt Berner is an urban and regional planner interested in ADA accessibility and pedestrian-scale design. She has experience working with both private and public agencies to address issues in access and mobility. Britt is currently leading CDG's efforts on the Edina Pedestrian and Bicycle Master Plan. Britt has designed and facilitated community engagement services for projects throughout the Midwest. She is also a GIS specialist with advanced knowledge of mapping tools, land use and other geospatial data.

### Education

Master of Urban and Regional Planning, University of Minnesota, Humphrey School of Public Affairs

Bachelor of Science, Geography, Colgate University

### Memberships

Association of Pedestrian and Bicycle Professionals (APBP)

American Planning Association (APA)

### Awards

Konosioni Honor Society (Colgate University)

Ally Award (Colgate University)

### Relevant Experience

- » US 59 Worthington Corridor Study - Worthington, MN
- » Bozeman Design Guidelines - Bozeman, MN
- » St. Joseph Comprehensive Plan Update - St. Joseph, MN
- » International Falls Comprehensive Plan Update - International Falls, MN
- » Grand Marais Comprehensive Plan Update - Grand Marais, MN
- » Minneapolis 2040 Comprehensive Plan Update Engagement - Minneapolis, MN
- » Oak Creek Safe Routes to School (SRTS) Planning - Oak Creek, WI
- » MnDOT Safe Routes to School (SRTS) Planning - Statewide
- » Edina Pedestrian and Bicycle Master Plan - Edina, MN
- » Ames Iowa CyRide Transit Redesign - Ames, IA
- » Fitchburg Pedestrian and Bicycle Plan - Fitchburg, WI
- » Rochester City Loop Transportation Study - Rochester, MN
- » SWLRT Kenilworth Landscape Design - Hennepin County, MN
- » Chamber of Commerce, Enbridge Line 3 Community Engagement and Research Support - Statewide
- » Red Wing Tactical Urbanism Pilot Demonstration Project - Red Wing, MN
- » Olmsted County 22 Corridor Study - Olmsted County, MN\*
- » City of Saint Anthony Public Engagement Plan - Saint Anthony, MN\*
- » Bloomington Bicycle Parking Ordinance - Bloomington, MN\*
- » Golden Valley Bicycle Plan - Golden Valley, MN\*
- » Met Council Principal Arterial Study\*
- » Fillmore County CSAH 1 Project Memo\*
- » Burnsville ADA Transition Plan - Burnsville, MN\*
- » MNDOT ADA Inspection and Quality Assurance (Stonebrooke Engineering)\*
- » Cellular Network Street Light Compatibility - Bloomington, MN\*
- » Bloomington Video and Manual Traffic Counts - Bloomington, MN\*

\*Projects completed prior to joining CDG





## Jono Cowgill, MURP

Planner

Jono Cowgill is an urban planner focused on creating more equitable places through inclusive planning, design, and analysis. He is especially interested in using creative engagement tools, including quantitative, qualitative and mixed-method approaches to capture community voices.

Jono currently leads the Grand Marais and International Falls Comprehensive Plans where he has incorporated a strong public engagement focus to truly reflect stakeholders' visions and ideas for their community.

### Education

Master of Urban and Regional Planning, University of Minnesota, Humphrey School of Public Affairs

Bachelor of English Literature, Pacific Lutheran University

### Memberships

Association of Pedestrian and Bicycle Professionals (APBP)

Complete the Streets Coalition

American Planning Association (APA)

### Awards

2016 Resilient Communities Program Outstanding Student Project for City of Victoria Wayfinding Plan

### Relevant Experience

- » Grand Marais Comprehensive Plan Update - Grand Marais, MN
- » International Falls Comprehensive Plan Update - International Falls, MN
- » St. Joseph Comprehensive Plan Update - St. Joseph, MN
- » Minneapolis 2040 Comprehensive Plan Update Engagement - Minneapolis, MN
- » CyRide Transit Redesign - Ames, IA
- » Red Wing Tactical Urbanism Pilot Demonstration Project - Red Wing, MN
- » Hennepin Avenue Redesign Community Engagement - Minneapolis, MN
- » Dale Street Bridge Reconstruction Community Engagement - St. Paul, MN
- » Edina Pedestrian and Bicycle Master Plan - Edina, MN
- » Fitchburg Pedestrian and Bicycle Master Plan - Fitchburg, WI
- » Eden Prairie Pedestrian and Bicycle Plan - Eden Prairie, MN
- » Edina Pedestrian and Bicycle Master Plan - Edina, MN
- » MnDOT Safe Routes to School (SRTS) Planning - Statewide
- » Oak Creek Safe Routes to School (SRTS) Planning - Oak Creek, WI
- » SWLRT Kenilworth Landscape Design
- » Rochester City Loop Transportation Study - Rochester, MN



## Chelsea Moore-Ritchie, MCRP

Planner / Designer

Chelsea Moore-Ritchie is an urban planner and designer with a passion for building multimodal, safe, and equitable communities that incorporate innovations in sustainability and healthy living. Chelsea has contributed to Safe Routes to School planning efforts, citywide bicycle and pedestrian plans, and a variety of land use and community outreach projects. In addition to being a trained planner, Chelsea is a skilled graphics specialist who has developed 2-D and 3-D renderings and graphics for diverse clients. Through her focus on transportation and land use, she hopes to help communities reduce their environmental impact and improve health and access by creating walkable, bikeable, and transit-friendly communities.

### Education

Master of City and Regional Planning, Bloustein School of Planning and Public Policy, Rutgers University

Bachelor of Arts, University of Minnesota

### Memberships

Bryant Neighborhood Organization Housing and Land Use Committee

Association of Pedestrian and Bicycle Professionals (APBP)

American Planning Association (APA)

### Awards

HUD Innovations in Affordable Housing Planning and Design Competition

### Relevant Experience

- » CSAH 81 Reconstruction Graphics - Hennepin County, MN
- » TH 252 Conversion Concept Study - Hennepin County, MN
- » Rochester City Loop Transportation Study - Rochester, MN
- » St. Joseph Comprehensive Plan Update - St. Joseph, MN
- » Grand Marais Comprehensive Plan Update - Grand Marais, MN
- » Oak Creek Safe Routes to School (SRTS) Planning - Oak Creek, WI
- » SWLRT Kenilworth Landscape Design - Hennepin County, MN
- » Edina Pedestrian and Bicycle Master Plan - Edina, MN
- » Newark Broad Street Station Vision Plan\*
- » HUD and Cuyahoga County Housing Authority Site Redevelopment Plan\*
- » Developers Guide to Transit Oriented Development for Metro Transit\*

\*Projects completed prior to joining CDG

This page intentionally left blank



Thank you,

