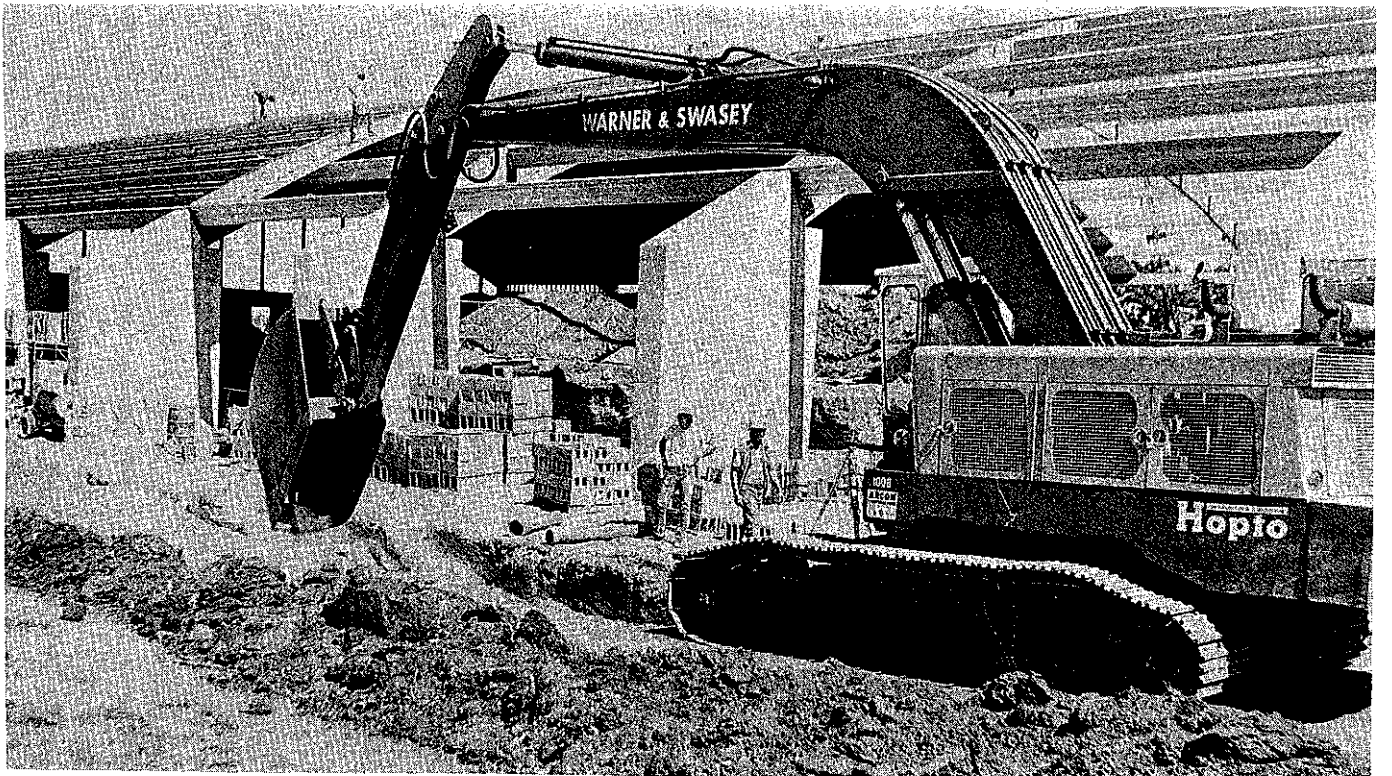


RUNESTONE COMMUNITY

Center





★ ★ *Dedication* ★ ★

PARTNERS IN PROGRESS

Alexandria is nestled in the middle of beautiful lake country in mid-Minnesota. Its natural splendor has attracted many people over the years. One of them was Ted Peterson, retired sportswriter (Mr. High School Sports) for the Minneapolis Tribune.

His interest in kids far from waned as he settled into retirement. One of the first things Ted did when he moved to Alexandria was to inventory the recreational facilities for high school sports. He found that they were not only inadequate for the three major sports, but also many of the minor sports suffered for the same reason.

When the West Central Minnesota Conference (to which Jefferson High School belonged) issued an ultimatum that it would no longer schedule league football games on the dangerous turf at Knute Nelson (baseball) Field, Peterson brought out the bandwagon. It wasn't long before practically the whole town jumped on with him.

Meetings were scheduled, committees formed and priorities made. A football field headed the list but it

didn't stop there. Plans were being formulated for a practice field, all-weather track facility, hockey lights and equipment, tennis courts and an all-purpose arena which would provide indoor ice skating and hockey facilities.

It wasn't long before a fund drive was organized. Dr. D. W. Bongard headed a team of volunteers which went out and raised \$70,000 over a relatively short period of time.

Because of this early effort, local facilities for sporting events began to improve substantially in the early 1970's. Hockey lights for all outdoor rinks were provided; the first Zamboni machine was purchased to properly prepare the ice surface; a new football field (Citizen's Field), complete with bleachers, became a reality; a new all-weather track was constructed (with the help of a lot of volunteer labor); a new football practice field was created; tennis courts were built (with a lot of help from the City of Alexandria).

Today, Alexandria Jefferson High School hosts an annual track meet named in honor of the catalyst who helped make it all possible — Ted Peterson.



PROGRAM

Formal Dedication March 12, 1978

1:00 - 3:00 P.M. — *Open Skating and Alexandria Pep Band*

3:00 - — *Opening remarks - Duane Braun*

A. *National Anthem*

B. *Invocation*

— *History - Les Gaugert*

— *Financial History - John Lervick*

— *Building Committee - Mike Lillehaugen*

— *Winter & Summer Use -*

Don Thompson & Howie Odden

— *Guest Speaker - Lloyd L. Brandt**

— *Unveiling of Plaque - Mayor Bisson
Brad Lemberg*

4:00 P.M. - *Entertainment*

A. *Figures, Ice Dancing, and Free Style Skating by the St. Cloud
Figure Skating Club - USFSA sanctioned*

B. *Mite Hockey Game (Approximately 5:15 P.M.)*

C. *Hockey Shoot Off (Children)*

D. *Senior Mens Championship (Approximately 7:30 P.M.)*

End of Program

* *Mr. Lloyd L. Brandt
Vice President of Public Affairs
First Bank System, Inc. of Minneapolis*

Program Committee:

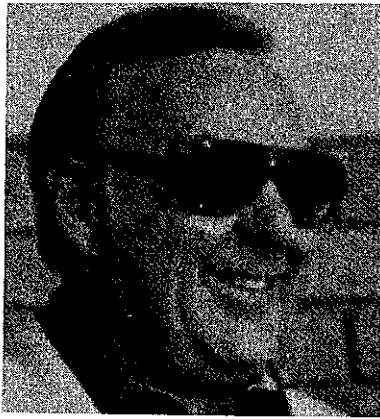
John Basten

Betty Blanchard

Duane Braun

Howie Odden

Mark Peterson



Erc Aga



Early 1930 --- Alex Redbirds in State Hockey Tournament

A history of hockey in Alexandria has no real beginning or place. A patch of ice and a group of kids spent a lot of hours together.

Back in the depression years, a local team sported colorful, new uniforms which created a threatening first impression to its opponents. Alexandria's Erc Aga reminisces a bit about the "good 'ol days" and his brief hockey career back in the '30's.

YEP, I remember the old Alexandria Redbirds . . . an independent hockey team we whopped up to help pass those dreary winters. Though there was no regular league then, we had a good schedule each winter and played over a good part of the state. We also played college teams.

THE REAL tough teams came from the Iron Range, of course . . . Crosby, Hibbing, Brainerd and Eveleth with the latter recognized then (as they are today) as among the tougher teams in Minnesota. I played in one state tournament with the Redbirds. The games were played in the Minneapolis Arena . . . a rare treat as we played mostly in blizzards or in a foot of water.

WE FOOTED our own bills by passing the hat at games . . . and the generous gifts from those ever-suffering business people helped buy a soft drink or two. We raised enough money for uniforms about the second year. I remember my first pair of shin guards were made out of the Saturday Evening Post.

WE TRAVELED back then in the Anderson Florist panel truck . . . and we had to let Ernie Anderson play so we could get to use it. Former Douglas County Sheriff, Howard Urness, was one of the better defensemen I can remember . . . not that he was all that good a skater but his legs were so long the opposing players would always be tripping over them.

FELTON SUSAG . . . now a golf ace . . . was a very smooth hockey player. He and Joe Hustad of Coca Cola fame scored most of the goals. A former Alex football great, Earl Landerholm . . . was the toughest player in the state. He couldn't skate all that well either . . . but he could (and sometimes would) whip anybody he ran up against. Our hockey rink was down in the hole by what is now the Central School . . . and we put up the boards and took them down each year by ourselves.

THAT'S ABOUT IT for my hockey career. Oh, we lost that state tournament I played in to Virginia . . . 3 to 2 in overtime. Not bad when you stop to think about it.

Athletic Facilities . . .

Hockey Not Only Sport Needing Improvements

After the Alexandria Community Athletic and Recreational Council was formed in late 1971 (for the purpose of upgrading outdoor facilities) the many problems pertaining to facilities were identified, plans to solve the dilemma were drawn and the need for money soon became evident.

Among the many papers in the bulging files which contain documented evidence of the extreme interest and hard work devoted to improve the situation . . . was a copy of a letter written by Ted Peterson. He had sent it out to possible money contributors. The letter vividly describes the situation as it existed:

Dear Sir:

Why the Alexandria Community Athletic and Recreational Council:

Be advised that in the fall of 1971 there was a realization that this community of 12,800 in the Greater Alexandria area has virtually nothing in the way of outdoor recreational and athletic facilities. No community in Minnesota — and probably the nation — had less. This is the reason why the Community Recreational Council, a small group of individuals, dared to accept a challenge to correct a situation that was leaving a supposedly progressive area with a tremendous black eye.

When Knute Nelson Field, primarily a baseball park, provided football conditions so bad that the West Central Minnesota League, of which Alexandria is a member, protested in its entirety against its use, both because of an inadequate surface and because of physical hazards to players, then emergency action was needed.

When the first organizational meeting was held on November 17, 1971, the Council found itself with even more pressing difficulties. The Alexandria hockey team was using a slough for its practice sessions, players reporting with shovels to clear the ice before they could skate.

Eventually, because of lack of equipment, the ice became so rough that the high school squad moved on dangerously thin ice on Lake Le Homme Dieu.

Without a dime, the Council committed itself to provide two lighted hockey rinks. A donation was obtained from the Lions Club to cover cost.

Then the Council set in motion the machinery to erect the first adequate football field in the history of Alexandria. A contribution of \$7,500 was obtained from the American Legion to spur the project.

The Council obtained corporation status, with all donations as a result being tax exempt. Without a drive, nine contributors in this community raised in excess of \$20,000, spread

over a period of months. Three banks in town contributed \$8,000.

Came spring and an even more astounding situation developed, some 300 kids out for track and NO TRACK. Their practice sessions were held on blacktop in a parking lot and on sidewalks in town.

Ever run on a sidewalk? Coaches of some of the girls out for track set up a course on a sidewalk surrounding the junior high school. They had stop watches for timing purposes and in effect the total picture was one to stir concern and compassion for a group of neglected kids.

The only time Alexandria kids taking part in track — varsity, junior high, girls — saw a regulation track was when they left town. With one of the best track coaches in the state, Alexandria still managed a district championship team. The girls were terrific, too, despite the handicaps.

There hadn't been a track meet in years in Alexandria, and this in an area where it could well be the host for major events in that sport.

Came spring and work finally got started on the football field. First there was grading (\$3,000 worth), then sodding, seeding and clearing the area of rocks. Actually, hundreds of persons in Alexandria took part in volunteer labor, men, women and children picking rocks, women and men laying sod. In all, it was a rare spectacle of community participation.

Business concerns provided soft drinks and ice cream for the workers unannounced and expecting no return. The mere values involved were immeasurable, particularly in the realm of community spirit.

The obstacles were many, but the football field came into being and the playing surface was ready for a five game home schedule. A set of once used bleachers, seating 2,000, were purchased at a vast discount from a Twin Cities group which put on a rodeo.

Lights were ordered, but a delay in delivery, resulted in the first two games being played in daylight. Even so, crowds attending games were the best in the history of Alexandria.

Only difficulty was that the community council, a group of five directors, found themselves with remaining indebtedness of close to \$10,000 and personally liable. Even so, the Council officially presented the field to School District No. 206, as an outright gift from the citizens of Alexandria.

The field itself is named Citizens Field since everything had been done without the benefit of a tax dollar, a most unique undertaking.

The current drive for \$50,000 is designed to erase indebtedness that exists as well as provide for a track, tennis courts and other facilities that in effect will make Citizens Field the best recreational and athletic facility in West Central Minnesota. It is for use not only by school children, but adults as well.

Hopefully, we will have the track ready before the track season is over in the spring. With lights already there, it will be the most widely used athletic facility in the community on a day and night basis.

Do you know that as of the moment there are just two tennis courts in this town, located at a city park?

The question always is asked — how was such a condition permitted to exist? Facts are that emphasis was placed on saving tax dollars, rather than need by the school boards and other governmental groups.

Be advised, also, that while individuals may have protested over the scarcity of such facilities in Alexandria, no group action of consequence developed until the Community Council was formed and decided on an old-fashioned barn-raising bee to meet the problem.

Some dedicated persons in this community have spent hundreds of hours of their time on this project, a fantasy of sorts that is moving into reality.

A challenge? Yes, and we come to you for help without any motivation for personal gain. Rather we're interested in the growth and image of this community. Mostly, however, we're interested in the welfare of our young people, the real source of wealth of any progressive community.

The writer of this article spent 29 years as a sports writer with the Minneapolis Tribune with special emphasis on being a public relations man assigned to development of high school athletics as well as all amateur phases of physical activity.

Cordially,

The Alexandria Community Athletic
and Recreational Council

Ted Peterson, Secretary
Jim Chan, President

After Football, Track Fields . . .

Attention Focuses on the Need for Hockey Facilities

While the efforts of the Community Athletic and Recreation Development Committee were in the process of raising money and improving the outdoor needs for football, track, etc., it became apparent that the assistance from the City of Alexandria would be needed if hockey was to have a decent facility, too.

Reacting to the enthusiasm of all the volunteer assistance available, the City Council appointed a Capital Improvements Committee in the spring of 1972 and L. H. Gaugert as its chairman. By the following

year, this committee actively began to pick up where the previous citizens group left off.

Recommendations for an indoor multi-purpose building location were made; various financing arrangements were studied; professional help was secured; trips to other ice arenas and performing art centers in Minnesota were made. It was during this time that the Amateur Hockey Association prepared a plea for the City of Alexandria and School District 206 consider a \$500,000 project.

A detailed report of committee findings was presented to the City Council in January, 1974. The first priority recommended to the city was the construction of some type of indoor ice facility. Second was the establishment of a performing arts building. (One building for combining the arts and hockey was ruled out because of incompatibility.)

The committee — after exhaustive studies — found that the combination of funds to be raised and funds to be borrowed and the contributions by the city would make such a project possible. School District 206 was listed as a prime user of the new arena. Ice was to be available for five months of the year and the other seven months were to be applied for the use of many other purposes, including the Douglas County Fair, Senior Citizens, exhibitions, auctions, circuses, concerts, tennis, sales meetings, horse shows, races, wrestling, early track training and other activities connected with health and physical education.

Among the recommendations to the city:

1. Cost should be approximately \$700,000.
2. The recreation facility should be operated by the City of Alexandria.
3. Should be located on the Douglas County Fairgrounds.
4. City should contribute \$350,000 towards construction costs with land donated by the Douglas County Agricultural Society (Fair Board).
5. A building committee for the recreation center be established.
6. A planning committee be formed for an arts and crafts building.

Numerous other contacts with the City Council followed. A bond issue was placed before Alexandria voters in December, 1974, with the hope that it would pass allowing the city to proceed with immediate funding of the project.

When the proposal was defeated by voters, "that and other delays," explained Les Gaugert, "were blessings in disguise."

Interested volunteers re-grouped and rather than losing interest, the desire to obtain an indoor ice facility became even more intense.

The real breakthrough came in March, 1975 when a merger of efforts developed between the Capital Improvements Committee and what we now know as the Runestone Community Center, Inc.

\$1 MILLION FACILITY BECOMES A REALITY

The Runestone Community Center Corporation originated with a citizen group concerned with the absence of any positive action for the development of an ice arena/multi-purpose building in Alexandria. The group was a cross section of business and community people, some of whom had been working on the City Council Capital Improvements Committee and some of whom had been involved in other developmental efforts for Alexandria. The initial meeting took place on March 22, 1975, when a suggestion was made that the group contact a professional fund raising organization. This was followed by a meeting of many of the same people on April 4, 1975, when a decision was made to form a non-profit, tax exempt corporation to serve as the vehicle for organization, administration, and fund raising for these purposes.

On May 6, 1975, a special meeting of the first Board of Directors of the Runestone Community Center Corporation was held. The corporation agreed to borrow \$3,500 from the First National Bank with the repayment of the note guaranteed by all eleven board members. The purpose for the loan was to provide the initial payment to the professional fund raising firm of Ward, Dreshman & Reinhardt. On May 22, 1975, the campaign executive committee was formed and a \$500,000 goal for the campaign was established.

On June 5, 1975, the fund raising efforts received a big boost when the First National Bank in Alexandria announced their commitment for ten percent (10%) of the \$500,000 goal or a pledge of \$50,000 payable over a five year period. The fund raising efforts — promoted as tax deductible — continued through the summer of 1975. On August 20th, the cut off of the active fund drive, the corporation had secured pledges and contributions in a total amount of \$540,000 from individuals and businesses within the Alexandria community. The ultimate result of the fund drive was the receipt of \$686,000 in cash pledges and materials.

ARCHITECT SELECTED

Shortly thereafter, the board of the Runestone Community Center Corporation officially designated a building committee. On December 2, 1975, the building committee made a recommendation to the Runestone Community Center Board that the firm of Bonestroo, Rosene, Anderlik & Associates be employed by the corporation to provide design services for construction of the building. Later that month, the corporation asked the Bonestroo firm to perform a feasibility study of a recreation center facility. On January 27, 1976, the Community Center Board established a preliminary budget of \$840,000 for the construction of a proposed community center.

CITY COMMITS

In early February, 1976, the City of Alexandria committed their participation in the community center project to the extent of \$300,000 by the issuance of gross revenue bonds. Based upon Runestone board recommendations, the City Council authorized invitations to bid March 1, 1976. Bids were opened on April 8th with the four low contractors submitting bids for the general, mechanical, electrical and ice systems, totalling \$856,965. A number of deletions and eliminations were exercised which reduced the total bid amount by the City of Alexandria to \$764,374.

Meanwhile, Runestone Community Center Corporation secured assurances from the local financial institutions that the corporation could make a loan on the security of the unpaid pledges in order to provide the City of Alexandria with a total cash contribution on the project of \$428,000.

In the interim, the building committee had met with the Douglas County Fair Board and ironed out details and arrangements for a lease on fairgrounds property for appropriate land upon which the building could be built.

CONSTRUCTION BEGINS

Construction on the project was commenced. Ground breaking ceremonies were conducted on May 30, 1976. The initial scheduled completion had been for November 30, 1976, however, because of unforeseen delays and routine problems in the construction project, ice was first made in the facility on January 28, 1977.

The costs for the building in the initial phase of construction were \$819,339. In addition thereto, the Community Center Corporation made certain contributions to the project in the total sum of \$77,843. These sums were paid by the corporation to take care of various contingencies and to provide for bringing the status of the building to desirable standards.

In addition to costs, the City of Alexandria, by council action, authorized in 1976 the invitation to bid for certain work to complete the facility as fully designed. Included in these bids was the installation of a sound system and the completion of the main entry level reception and concession area. Total cost for completion of the project was the sum of \$994,921.

Commission Established

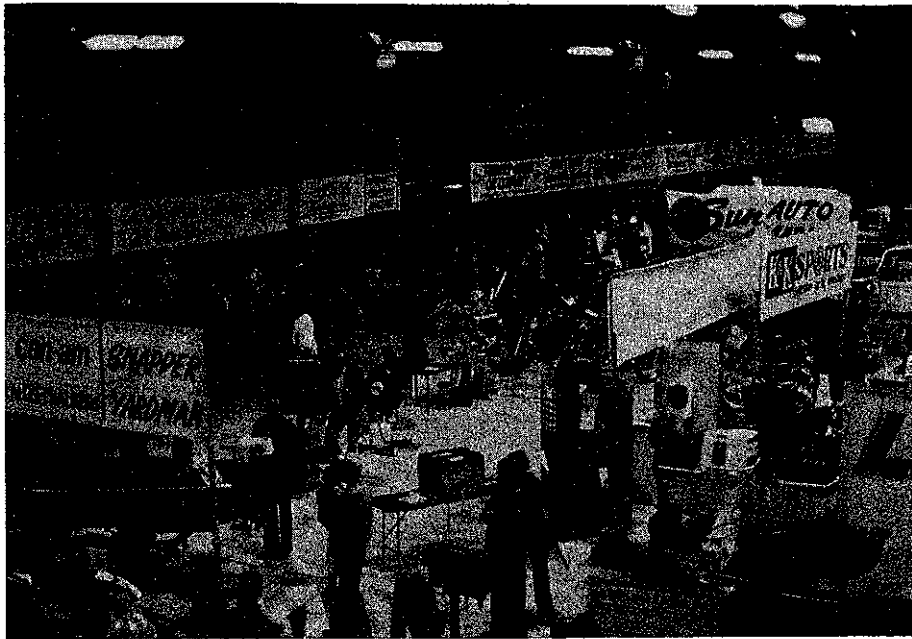
An ordinance establishing a Commission for the operation and management of the Alexandria Runestone Community Center was approved by the City Council on July 12, 1976. The original Commission consisted of Dr. Jerry Mohs, Earl LaMaack, Mrs. Betty Blanchard, John Basten, and Don Thompson, Chairman.

The Commission has undergone some changes in personnel and now consists of Howard Namur, Dick Haugen, John Sullivan, John Basten, and Don Thompson.

The first line of business was to hire a general manager for the new center. Through an extensive advertising campaign, the Commission received in excess of twenty qualified applicants, and finally, through a process of interviews, the Commission selected Mr. Howard Odden. Howie was the Commission's top selection and has certainly strengthened this position since he joined our community on November 15, 1976.

On Mr. Odden's advice, Mr. L. G. "Bud" Fitzgerald was selected as the maintenance superintendent and his contributions have been in every area of operation and have been greatly appreciated by both Mr. Odden and the Commission members.

The staff has since been rounded out by the hiring of Mary Johnson as receptionist and secretary, and Erland Malmgren as supervisor. Two part-timers, Dell Karl and Kim Schultz, help with the general upkeep of the building.



THE RUNESTONE COMMUNITY CENTER...

NOW THAT IT'S UP . . . WHAT DO WE HAVE . . . AND HOW IS IT USED?

The Runestone Community Center well displays how beauty and utility can successfully be combined in a civic building. The Community Center is striking in its contemporary design, highlighted by laminated wood ceiling arches, purlins, deck, and end walls. The vaulted ceiling and many windows contribute a sense of openness and unity of design.

In practicality as well as beauty, however, the Runestone Community Center is unmatched. Permanent seating now exists for over 1,200 people, and seating potential increases to well over 3,500 for summer "dry-floor" events. Carefully fitted into the lower-level structure are four separate dressing rooms, restrooms, a busy vending area, and first aid and officials' room. The second floor provides an observation area overlooking the rink below, cafeteria-style concession stand, restroom facilities, and spacious office areas. As yet, the third floor is not completed.

Technically, the Runestone Community Center is equipped to meet the needs of the most demanding user. It offers a 32' x 40' stage on 4' x 8' 30" risers, 30 amp electrical service capable of providing 280-volt circuitry, and a sophisticated, multi-purpose public address system.

Easy accessibility is provided by ample parking, ramps and stairs, seven emergency exits, a service road, and ground-level 14' x 14' overhead freight door.

The winter program offers excellent hockey and ice skating facilities. During the winter months, the prime users of the ice sheet are the Alexandria Cardinals high-school hockey team. In addition, the Alexandria Amateur Hockey Association provides a hockey program for youngsters, age five to fifteen.

The Alexandria Community Services department has offered ice skating lessons to people of all ages during the past two skating seasons. The newly formed Alexandria Figure Skating Club is growing by leaps and bounds.

Many surrounding communities, including Glenwood, Sauk Centre, Little Falls, and Long Prairie, have purchased ice time for their hockey programs.

The Senior Men's Hockey League involves about one hundred people who participate on six different teams. The teams play on Sunday evenings over a five-month period.

Varied special events provide balance to the daily programs. Among these are high school hockey games, the state senior men's tournament, youth hockey games, two semi-professional games, Holiday Inn Squirt Tourney, a college hockey match-up, and holiday festivities. The future points to more hockey and figure skating shows and attractions.

During the summer the Runestone Community Center is utilized for a variety of shows, exhibitions, conventions, athletic events, civic affairs, meetings, and others, with a myriad of possibilities. After an initial slow summer, the future looks very bright for the Runestone Community Center. Already booked for this summer are the KXRA Home Show, the Emmett Kelly Jr. Circus, and Alex Boat Works Boat Show, and several other events!

In the not-too-distant future, expect the Runestone Community Center to be the focal point for most community events!

OUR THANKS TO OUR PARTNERS

Thanks to the generous, grass roots contributions by unselfish citizens and businesses in the Alexandria area, this beautiful and functional community center is a reality. The following list contains the names of those who rallied behind the cause with their donations. Total monies collected during the fund drive amounted to \$686,000.

PLEDGES

ABW, Inc.	Andy's Interlachen Inn	Bosek, John
A & W	Angelina's	Bowen, Duane
Action Real Estate	Angen Auto Sales	Braun's Quality Bakery
Ahlfors, Raymond	Aquarius 75, Inc.	Brolin, Robert
Ahluquist, Paul T.	Arendt, R. J. Dr.	Burnes, James
Aga, Scott	Arrowwood	Buttweiler's Do-All, Inc.
Aker, O. M. "Bud"	Given in Memory of Bob Nyvold	Carlisle - Andrews Insurance
Akhavan, T.	Backlund, Gary	Carlson Dairy
Alex Athletic Supply	Ballard, Paul	Carlson Music Center
Alexandria Chiropractic Clinic	Barnes, Bruce	Christopherson, Charles
Alex Glass & Paint	Barnes, Tom, Jr.	Christopherson, Ed
Alexander's For Men	Barthelemy Furriers	Clayton, James
Alexandria's Amateur Hockey Assoc.	Basten, Mr. and Mrs. John	Coast to Coast Store
Alexandria Bank & Trust Co.	Bauer, Richard C.	Coca Cola Bottling Co., Inc.
Alexandria Beverage Co.	Baumbach Drug	Colonial Club
Alexandria Electric, Inc.	Schultz, Russel	Community State Bank
Alexandria Extrusion Co.	Bechtel, Kenneth	Connor, Tom
United Federal Savings & Loan Assn.	Beliveau, E. C. & Betty	Country Kitchen
Alexandria Funeral Home	Belgum, Herbert	Cowing-Robards, Inc.
Alexandria's Jaycees	Berger Standard	Credit Bureau of Alexandria
Alexandria Lumber Co.	Berger, William	Crest, Jerome
Alexandria Newspapers, Inc.	Bergstrom, Alan	Crown Realty
Alexandria Rotary Club	Bill, James A.	D & D Auto Clinic
Alexandria Veterinary Clinic	Bisson, Vern	Darling Coiffures
Alix Shoes, Inc.	Bjirdahl, Kenneth	Davis, William L.
Anderson, Bob	Ludke & Co.	Doege, Ben
Anderson Florists & Greenhouse	Blanchard, Frank L., Dr.	Domschof, Ron
Anderson Funeral Home	Blank, Roger	Donnelly Plastic Co.
Anderson Furniture Co.	Blomgren, Carl	Dot Distributing, Inc.
Anderson, David P.	Bloomquist & Bakewell, Drs., PA	Douglas County Insurance Agency
Anderson, George	Bluhm, Donald	Douglas County Real Estate
Anderson, Jere	Bob's Clothes Shop	Douglas Machine
Anderson, Paul H.	Boerner, Pete	Dressel, Richard
Anderson, Wm. J.	Bon Jos	Duray, C. A.
	Bongard, D. W., Dr.	Dusing, Raymond
	Borowicz, Raymond	Ebensteiner, Jack

PLEDGES — cont.

Electric Contracting
Ellison, Dale
Elton, Wayne
Engbretson, Paul, Dr.
Erickson, John L.
Ernst, William B.
Fiebranz, Ray
Fingerhut Mfg. Co.
Fire Place, Inc.
First National Bank in Alexandria
Fitzgerald, Bud
Flanders, Bob
Flesner, Dale T. V. Service
Flint, Glenn
Freeway Motor Sports
Furniture City
Gallagher, Pat
Garden Center, Inc.
Garvie, John & Winfrid
Gaugert, L. H.
Gibson Discount Center
Glesne, Robert & Lynn, Drs.
Gore, Ronald R.
Green, John F., Dr.
Green Thumb
Greengo, Richard
Grover, Morris & Barbara
Grussing, John
Gustafson, Richard
Hafdal, Arthur O.
Hall Engineering
Hanson, Donald C.
Hanson, Fred C.
Hansen, Larry
Hanson, LeRoy
Hanzlik, Stephen
Hardee's Restaurant
Harnish, D. W., Dr.
Harris, Mr. and Mrs. Richard
Hartung, Al
Haskins, William
Hayes, Robert
Hegg, Robert
Heinrich, Vernon
Hens, Lee
Henry, Stephen, Dr.
Herberger's
Herzog, Don
Herzog, Frank M.
Hill, Ronald
Hill, Walter
Hintzen, Richard
Holiday Inn of Alexandria
Holm, Ellsworth
Hovda, Clayton & Judy
Howe, Richard
Hubbard Milling Co.
Hunt, Kai K., Dr.
Huschke, Dan
Hustad Corp. DBA Hustad Homes
Hustad Corp. DBA Interstate Marine
Hustad Corp. DBA Western Lumber
Interstate Auto Glass
Irgens, Lawrence H., Dr.
Jergenson, Galen
Johnson, Donald C.
Jerry's Jack & Jill
Johnson, James D., CPA
Johnson, Leland C.
Johnson, Richard A.
Johnson, Robert Associates, Inc. 1
Johnson, Warren L.
Jones, Bob
Juettners Motor, Inc.
KCMT-TV
KXRA Radio
Karl, Mr. and Mrs. Wallace D.
Karlstad, Harlan
Karrow's Jewelry
Kelly, Mrs. Edith
Kjos, Richard
Korkowski, Cliff
Krogstad, Cortlan
Kummrow, Samuel
Lake Region Co-operative
Lantz, Bradford
Lampert Building Center
Larson, David, Dr.
Larson, Robert Duane
Lawler, Steffen & Johnson, Drs.
Lee Motors, Inc.
Lehman, James
Libera, Mary
Lillehaugen, Mike & Kathy
Lervick, John
Linow, Warren
Lohrman, Ted
Lindquist Equipment Co.
Lindquist, Joan
Loucks, Robert J.
Lundberg, Orin
Lundgren, Donald
Lyngen, Dennis
Maack, Vernon
Madsen, Mr. and Mrs. Richard
Martinson, Marvin
Mateer, William
Merickel, J. H., Dr.
Meyers, Robert
Miller, Orrin
Miller, Owen G.
Minnesota Mining & Mfg.
Mohs, Jerome, Dr.
Moland, Carl
Monahan, Edward, Dr.
Morrison, Clair V.
Morse, Clifford H., Jr.
Movold, Mark & Margaret
Mulier, Leon
McCarten, John J.
McDonald's
McGuire Ford & Mercury, Inc.
Larrivee Ford & Mercury, Inc.
McKay, George
McLaughlin & Schulz, Inc.
Namur, Howard
National Bushing
Neal, William
Nelson, Curtis C.
Nelson, H. Boyd
Nelson, Rick
Nelson, Rodger L.
Ness, Dan H.
Newhouse Machinery Co.
Newman, James
Noetzelman, Don & Doris
Nordstrom, Harold
Norenberg, Curtis & Nikki
Norlund's Douglas County Ambulance
Northland Company of Alex
Northside Heating & Air Conditioning
Northwood Specialty Co.
Northwood Specialty Company
Parkers Prairie, Minnesota
Norton's Refrigeration
O'Brien Printing
Olson, Duane L.
Opsal, Donald
Osterberg's Cafe
Otterson, Ronald
Paciotti, A. A.
Patrick, James J.
Pedersen, Bjorn
Pennar, Robert
Penney, J. C. Co.
Perkins, D. E., Dr.
Pete's Super Valu
Peterson Drug Store
Peterson, Ernest
Peterson, Maynard
Peterson Sheet Metal, Inc.
Pfeifle, Earl
Plywood Minnesota
Pohl, James L.
Pots & Plants
Powers, Albert
Prag, Ken
Prinkey, Otis H.
Production Credit Assn.

Property 2 Real Estate
Propp, Le Moyne
Quam, Alan, Dr.
Radermacher, Andrew
Ray's Signs & Advertising
Redfield, Keith
Reif, Thomas J.
Rilling, Red & B
Robo Car Wash
Roering, Robert
Ron's Warehouse Sales
Rosengren, Victor
Rosengren, Walter E.
Roth, Merlin
Rowland, Stephen
Rudy's Electric
Rural Publishing Co.
Ryder, Kevin
S & N Standard
Savageau, Tom
Schelin, George
Schneiderhan, A. C.
Schoening, Allan
Schoeneck, Gerold
Schroeder, David
Schroeder, John D.
Schroeder, Noel
Schroeder Supply, Inc.
Schultz, Al, Real Estate
Schultz, Harold
Schuneman, Noble & Jane
Seltz, Jack
Sertoma of Alexandria
Serum, Dale
Sheehan, Charles
Shelden, Duane
Shellito, Larry & Evonne
Shield Services
Shelstad, Merlyn
Shirley's Realty
Sieling Texaco Oil
Sieling & Hackman Oil Co.
Soderholm, Partington & Schreiner
Agency, Inc.
Solum, Dolores
Sondgeroth, Keith
Star Electronic Service
Starke, Frank
Steen, Franklin, Dr.
Steffl, Herbert
Stemsrud, H. L., Dr.
Stenso, Charles
Stensrude, Merlyn
Stenzel & Crosby Tire Recapping, Inc.
Stephens, John
Stevenson's
Stone, George C.

Stueve, David
Sullivan, John A.
Surge Service
Swanson, Dorothy
Swedberg, Lyle
Swenson, Robert C.
Syverson, Gary
Tanquist, E. J. Jr., Dr.
Tillitt, Ralph
Tentelino Enterprises
Tessmer, Kenneth
Tewes, Harvey D.
Theiss, Fred
Then, Larry
Thoennes, Joseph
Thompson, Donald H.
Tip's Interstate Mobil
Tork Parts
Trumm Drug
Updike, Genie
Undem, Dale, Dr.
Vernon Studios, Inc.
Viking Book & Stationery
Viking Ice
Viking Motel & Restaurant
Viking Real Estate Co.
Viking Sports
Vipond, Clarence
Vipond, Robert F.
Roger's Steak Out
Vogt's Electric
Volker, Richard
Waage, Walter
Waller, Stephen
Walsh, Mark
Walters, Everette
Wedum, M. C.
Westby, Philip Rev.
Westerfeld, Merle
Wheeler, Douglas
Widmark, Milo
Wiles, Dick
Yeutter's Bakery
Zinda, Daniel

MATERIAL AND SERVICE SUPPLIERS

Alexandria Concrete Company
Alexandria Office Supply
KXRA Radio
Custom Floor Covering
Dean Wussow
H. McWhorter
Perry's Hi-way Furniture
SportsArt Printing
Wayne Lee Excavation Contractor
Rollie's Digging & Trenching

Wencil Kroupa Construction & Excavating
Wilfred J. Johnson Digging & Trenching
Gary Larsen Construction
Lakeland Excavating
K & K Enterprises
Wogan Trenching Service
Lybeck Sodding
Dale's Sanitary Service
Runestone Sand & Gravel
Alexandria High School A. Club
Score Board
Lake Region Plumbing
Bjerke Sign Co.
Paul Aslagson
Tom Rice
Watkins Construction Co.
Lee Saeugling
John S. Watkins
Richard Abbott
Tim Fitzgerald
Robert Olson
Frank Verdugt, Jr.
Jay Baldwin
Brad Kneisl

CASH DONATIONS

McComb, Knutson
P. Anderson
Swenson, Grover & Lervick
American Legion Post of Alexandria
Minnesota Natural Foundation
Traveler's Inn
Dewey Swanson
Pease Champion Auto
Mrs. Lee Johnson
Martin's Super Market
Kenneth Johnson
James O'Brien
Harold Podolske
John C. Peterson
Art Engelbrecht
Norman Anderson
Lyndale Terminal Co.
Roy Palmer
James H. Boyd
Johnson Heating & Plumbing
Thornton & Thornton
Parker Heath
Dr. Lowell Gess
Nodlund Associates
Freeway Skelly Restaurant
T. J. Peterson
United Telephone Co.
Gerald Swartz
H. J. Thompson
Todd Lundgren
Jerry Wright

CASH DONATIONS — cont.

Ernie Kleven
Ernie Unruh
Garfield Lumber Co.
George Dyrstad
Arlan E. & Jeanette Johnson
Fred S. Glanville
John Lauritzen
Pennington, Charles Mrs.
Walz, John
Rutten, Ronald
Bursch Travel Agency
Kuhlmann, Vernon G. Dr.
Robards, H. B.
Bartholomew, Lester
Stewart, Richard Dr.
Jornson, Gary
Mansur, Morton J.
Serenius, Arnold C. Dr.
Holiday Village
Conn, Dennis
Activity Fund of Jefferson School
Clarke's Auto Body
Montgomery Ward of Alexandria
Lakes Motel
Continental Custom Bridge
The Advertiser
Skyline Motel
Austin, Arthur
Mammel, Carl
Auto, Inc.
Dalseth, Rev. Gerald
Engstrom, James
Ganje, Bennie
Goodrich, Evelyn

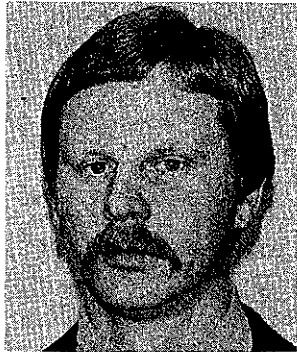
Hustad, Don
Krump, Charles A.
Lakeland Auto Electric
Melaas, Paul
Mohawk, Robert
Pantze, Melvin
Pearson, Alice L.
Tessmer, Everett
Van Beek, Frances
Van Beek, Jake
Van Beek, Sam & Marlys
Wisard, Clara
St. Marie, M. A.
Anderson, Harold & Lorraine
Johnson, Melvin J.
Ranum, Betty
Doebbert, Lowell
Heckert, Jerold
Johnson, Donovan
Marboe, Charles
Wieberdink, Vernon
Thompson, Warren
Beuning, Anita
Citizens Loan & Investment Co.
Ritche, Netta
Olson, Lloyd P.
Johnson, Belle
Tarte, Joann
Tarte, Wells
Wiley, David
Weatherwax, Gerald
Wedum, Mabel
Magnuson, Ruby
Stingleheimer, Otto
McKay, Myrtle

Diment, Mort
Woessner, Millie
Johnson, Sylvia O.
Besse, Jane
Floding, Clarence & Kathryn
Anderson, Winfred
Turner, Milton
Pederson, Merle
Plachecki, Richard
Olson, Richard
Given in Memory of Mrs. Glenna Myers
Anderson, Earl R. Jr.
Johnson, Kenneth
Bisek, Dewayne
Modin, Ann E.
King, Cora
Alto, Helen
Whalen, Bernice
Bemo, Harry, Evelyn
Nielsen, Ejler
Ogren, Don
Larson, Clarence O.
Hiller, Harvey
Delay, Gordon
Olson, Margie
Toltz, King, DuVall, Anderson &
Assoc., Inc.
Bakke, Clifford M.
Wenaas, Mr. and Mrs. S. O.
Taco John's
Farmers Union Oil Co. Care Care Center
Women's Club of Alexandria
Martinson, Arnold
Bergien, Paul
Gess Eye Clinic



People . . .

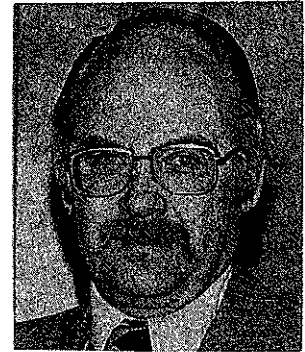
Backbone of the Center's Success



HOWARD ODDEN
Center Manager



L. H. GAUGERT
Finance Committee
Board Member



MICHAEL LILLEHAUGEN
Finance Committee
Building Committee
Vice President
Board Member



RICHARD HAUGEN
City Commission



JEROME MOHS
City Commission



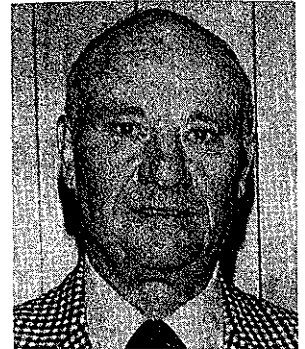
JOHN SULLIVAN
City Commission



WILLIAM MATEER
Finance Committee
Board Member



KENNETH TESSMER
Secretary
Board Member



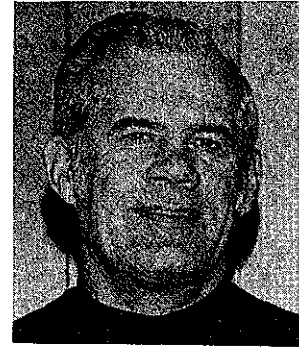
HOWARD NAMUR
City Commission



LARRY HANSEN
Former Board Member



ARLAN E. JOHNSON
City Clerk
Treasurer



LES SHOGREN
City Council



DOROTHY KOB
City Council



DAVID MARTIN
City Council



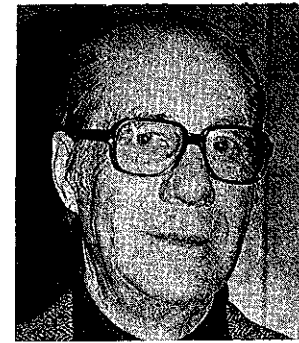
MARGARET LEUTHNER
City Council



EARL LAMAACK
City Commission



JOHN LERVICK
Building Committee
Treasurer
Board Member



ELMER ALBERG
Building Committee



FRED THEISS
Former Board Member



PAUL NELSON
City Council



WILLIAM ANDERSON
City Council



DUANE BRAUN
President
Building Committee
Board Member



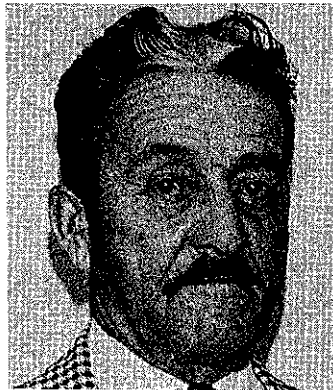
JOHN BASTEN
City Commission
Board Member



BJORN PEDERSEN
Finance Committee
Board Member



DONALD H. THOMPSON
Building Committee
City Commission
Board Member



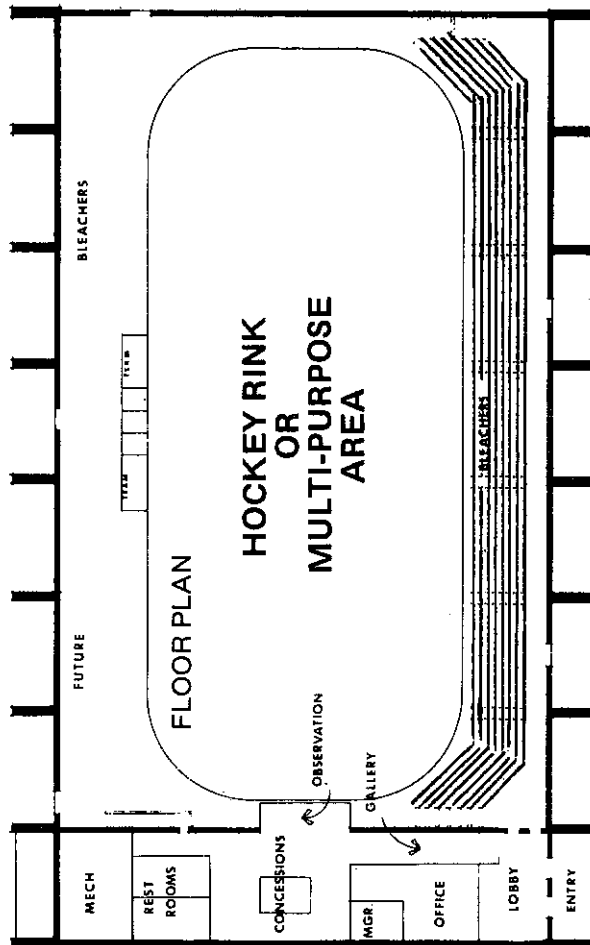
VERN BISSON
Mayor



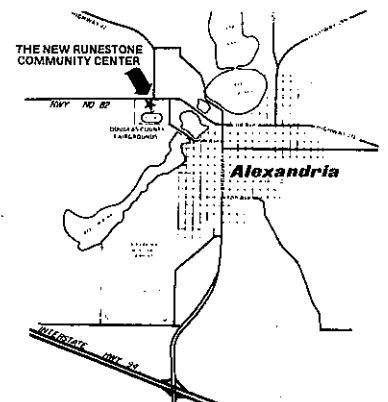
STEPHEN WALLER
Board Member

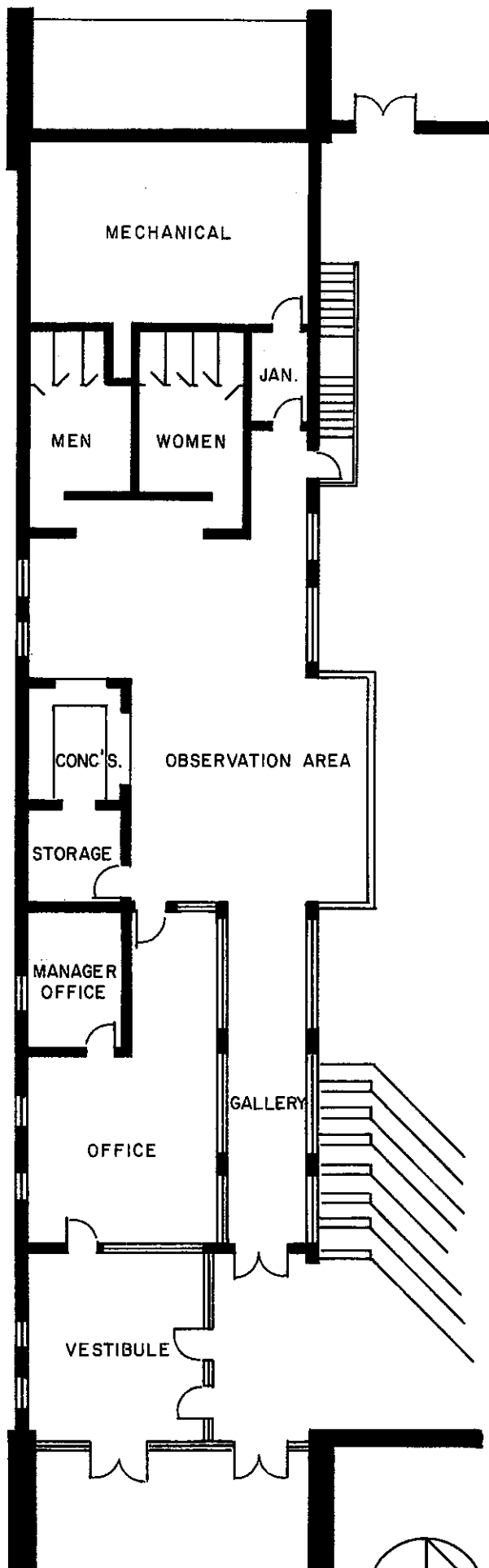


ROBERT HAYES
Building Committee
Board Member

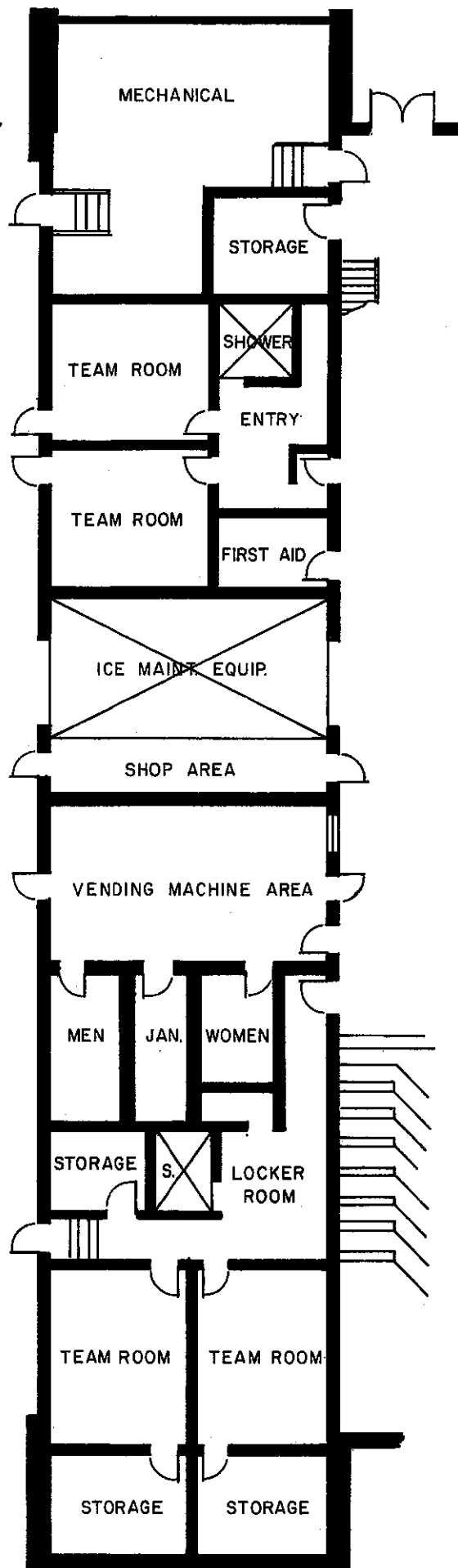


BETTY BLANCHARD
City Commission



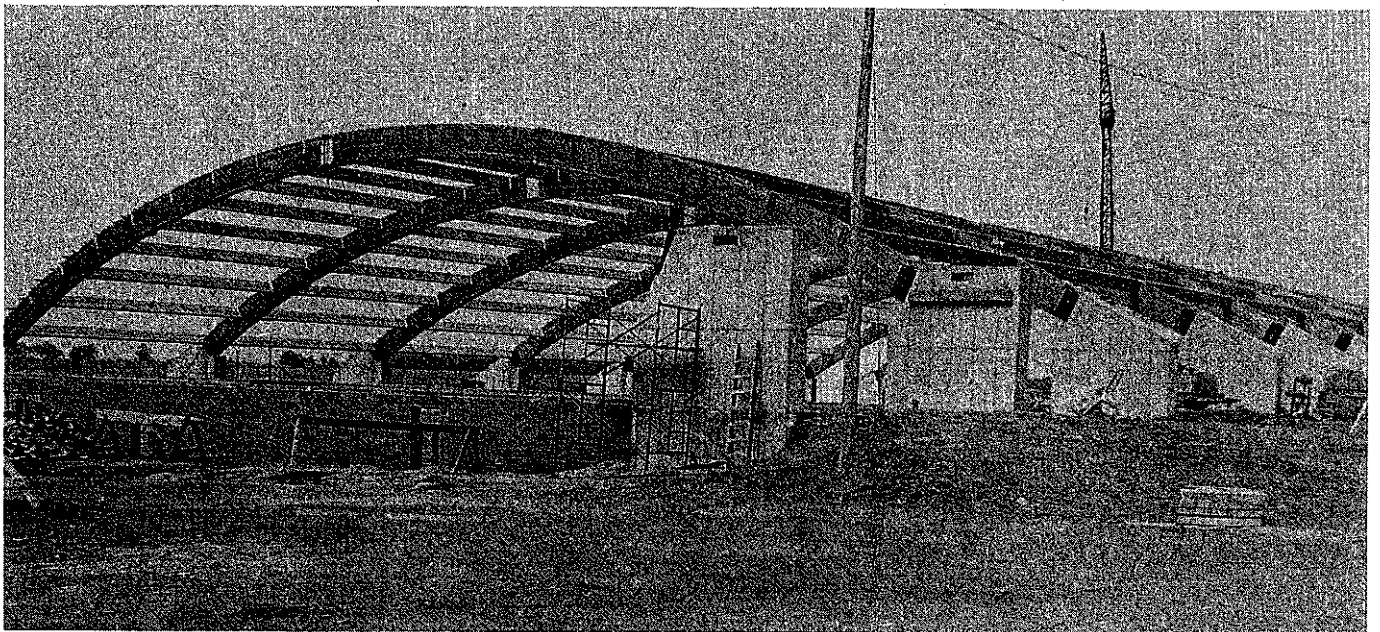
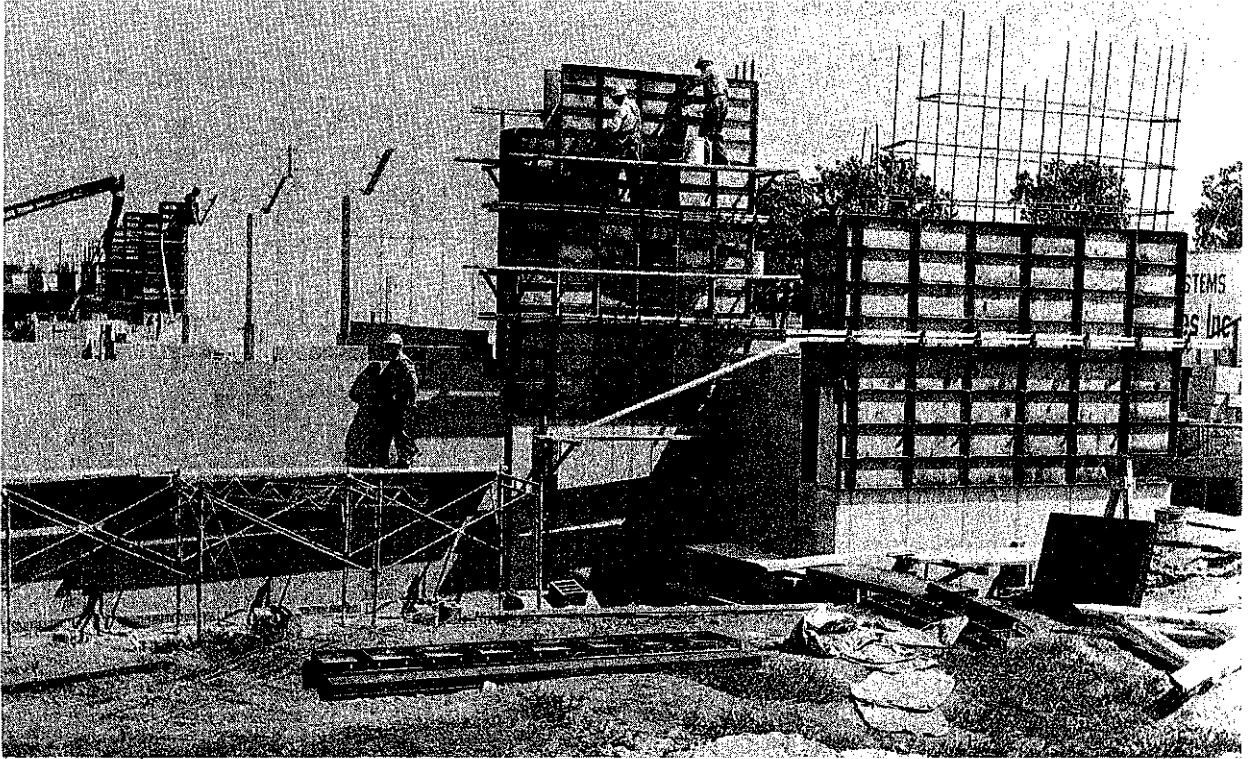


FIRST FLOOR



GROUND FLOOR





Runestone Community Center

Alexandria, Minnesota

DIMENSIONS — FEATURES — ITEMS OF INTEREST

Auditorium Area, Multi-purpose	135' x 217' — 29,300 Sq. Ft.
Basement Service Area	31' x 135' — 4,185 Sq. Ft.
Main Lobby, Office & Service	31' x 135' — 4,185 Sq. Ft.
Upper Service Area (Incomplete)	31' x 120' — 3,720 Sq. Ft.

PLUS:

Total Floor Area	41,390 Sq. Ft.
Excavation Below Entrance Grade (East to West)	11 Feet
Rafter Span	135 Feet
Rafter Height to Main Floor	34 Feet
Number of Exits (Not Counting Service Areas)	11
Permanent Seating (8 Rows)	1,260 Persons
Space for Future Folding Bleachers	1,240 Persons
Total Seating Capacity When Completed	2,500 Persons

- Four Team Rooms
- First Aid Room
- Equipment Room
- Skate Sharpening Room
- Three Concession Areas



Location: Douglas County Fairgrounds at the corner of State Aid Highway 82 and County Highway 22; across from Williams Brothers Pipeline Terminal.

P.S.I.; 12,000 Lin. Ft. 3/4" P.V.G. heat pipe under 4" insulation to prevent frost penetration if necessary; 2,000 Lin. Ft. drain tile under slab to catch any water penetration.

Ground Breaking Date May 30, 1976
 First Activity January 28, 1977
 Approximate Cost \$994,921

Remaining items to be completed in the future; Vault for records in the office; chalk boards and bulletin boards; carpeting in general office and superintendent's office; installation of elevator and completion of upper floor for use as Senior Citizens' Center, Rec. Center or other uses, as determined by the City Council.

Latest Freon System used for freezing and maintaining ice. 6" concrete floor; 48,000 Lin. Ft. 1/2" stainless steel pipe embedded 1" under surface. Tested at 300



- ENGINEERING Bonestroo, Rosene, Anderlik & Assoc., St. Paul
- GENERAL CONTRACTOR Winkelman Enterprises, Inc., St. Cloud
- MECHANICAL CONTRACTOR Weidners Plumbing & Heating, St. Cloud
- ELECTRICAL CONTRACTOR Alexandria Electric, Inc., Alexandria
- ICE RINK CONTRACTOR Holmsten Ice Rinks, St. Paul



247 FM Station

AUTO TRANSPORTS

WIRE PLAS

